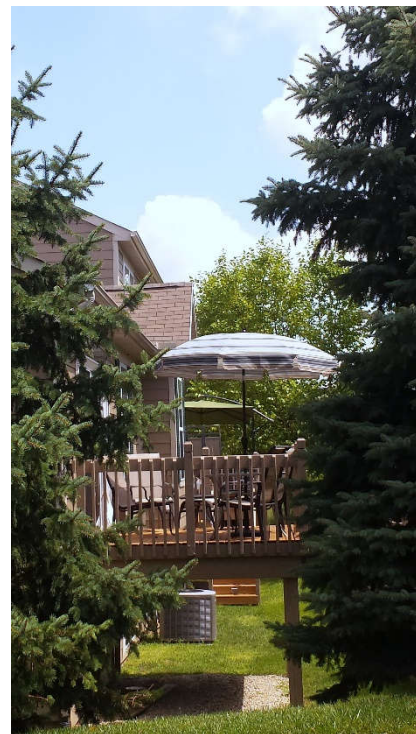
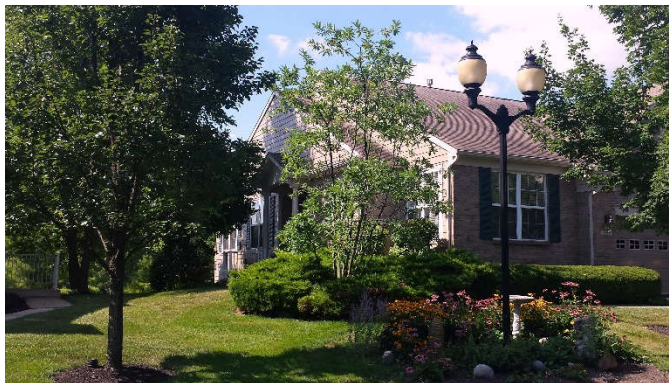




# Canterbury Village Condominium Association and Community

[www.CVcondo.com](http://www.CVcondo.com)



**Seventy-four homes on over 12 beautifully landscaped acres provides a level and quality of green space uncommon in Beavercreek-area condos.**

## **Easy and convenient location:**

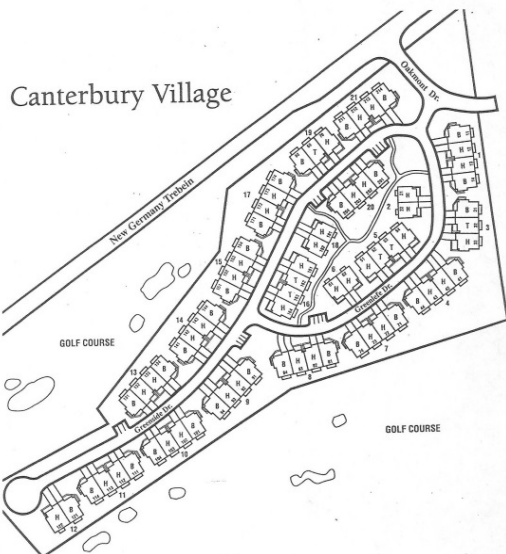
- **WPAFB – 10 min.**
- **Fairfield Commons Mall – 5 min.**
- **Soin Medical – 5 min.**
- **Wright State Univ. – 10 min.**



**A Beavercreek Golf Course Community  
Greenside Drive      Greenlefe Drives**



**Enjoy casual strolls on our 1/2 mile of private road and courtyard walking path and then relax in at the gazebo at the center of the tree-filled courtyard.**



A professionally-managed Association, Canterbury Village provides the level of services you expect from your new condo lifestyle. The Association Board is comprised of owner-volunteers who provide oversight and ensure the financial transparency required for our informed piece-of-mind.

Make an informed buying decision - Association financial details are available at all times on a secure section of the Association web site ([www.cvcondo.com](http://www.cvcondo.com)).